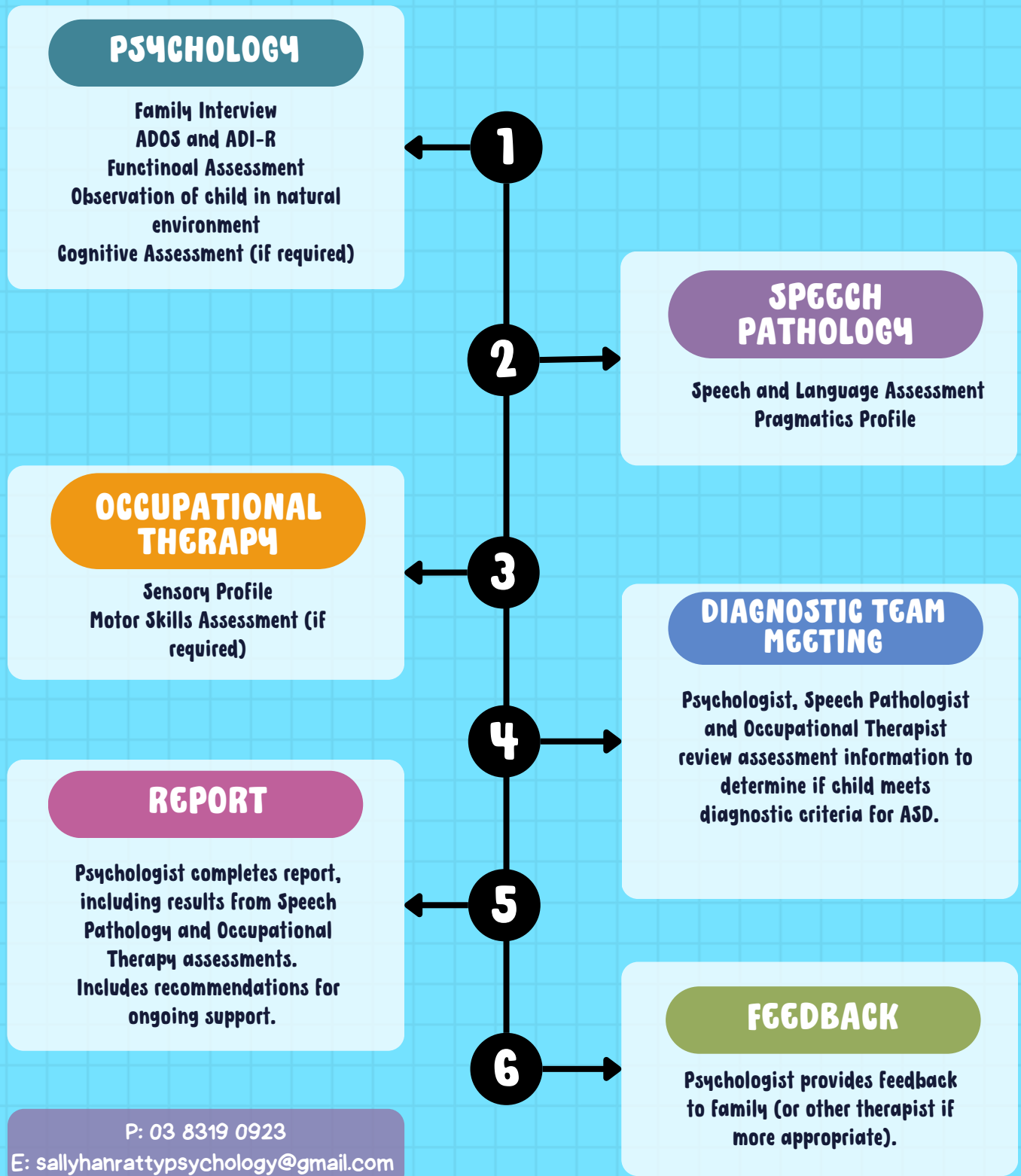


AUTISM ASSESSMENT TEAM, MANSFIELD



FEE STRUCTURE

PSYCHOLOGY

Family Interview
ADOS and ADI-R
Functional Assessment
Observation of child in natural environment
Multi-disciplinary diagnostic team meeting
Assessment Report
Family Feedback session
\$2000

Cognitive Assessment (if required)
\$990

SPEECH PATHOLOGY

Speech and Language Assessment
Pragmatics Profile
Assessment Report
Multi-disciplinary diagnostic team meeting
\$900

OCCUPATIONAL THERAPY

Sensory Profile
Assessment Report
Multi-disciplinary diagnostic team meeting
\$600

If you have had any of these assessments in the previous 12 months, please let us know and we can negotiate a price.